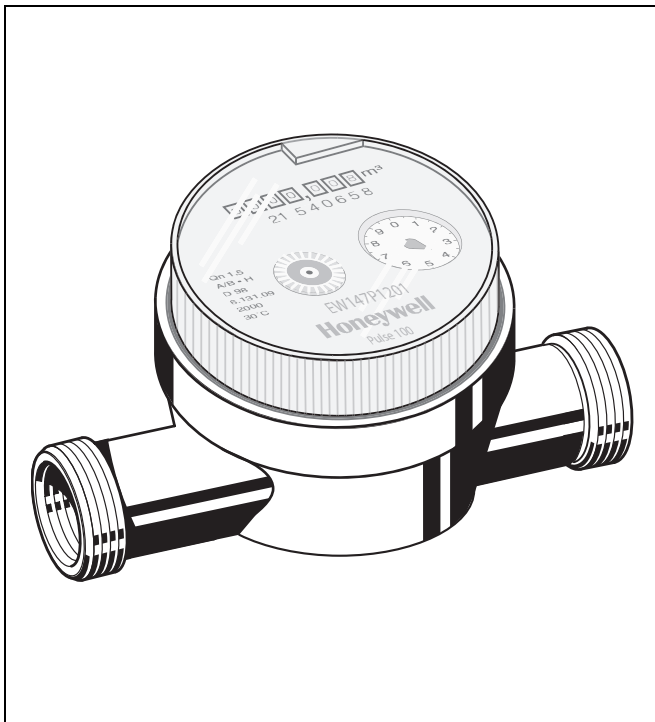


EW147-EW148 Series Potable Water Meters

SINGLE-JET WARM AND COLD WATER METERS

PRODUCT DATA



Design

The potable water meters consist of:

- Meter housing PN10 with external threads
- Dry-running meter
- Impeller with magnetic coupling

Materials

- Meter housing made of brass
- Impeller and counter housing made of plastic

Application

Single-jet water meter for cold or warm potable water up to 90°C. Available with pulse or RF output or without output
 EW147 and EW148 Series water meters are used to meter the volume throughput in cold and warm potable water pipelines. They are suitable for vertical or horizontal riser or downpipe installation.

Features

- EC type approval to EO6: D98-6.131.09 (cold = EW147); D98-6.331.93 (warm = EW148)
- Metrological class: A B•H (A - any position, B - horizontal)
- Completely dry-running design with magnetic coupling
- Rotatable counting unit
- Protected against magnetic interference
- Available as standard version or with pulse output
- Standard version retrofittable with RF interface

Specifications

Medium	Cold or warm potable water
Operating temperature	EW147: max. 30°C (86°F) EW148: max. 90°C (194°F)
Operating pressure	PN10
kv(cv)-value	qp1.5: 3.4 (4.0) qp2.5: 5.0 (5.9)
Protection class	IP54

Dimensions

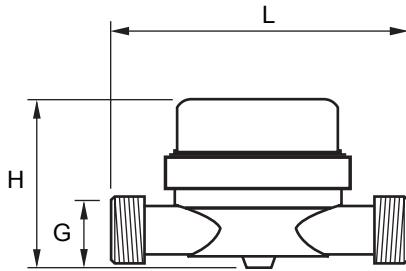


Fig. 1. Dimensions

Table 1. Dimensions

Nominal size	qp [m³/h]	1.5	1.5	2.5
DN size		15	15	20
Body length	L [mm]	110	130	130
Overall height	H [mm]	66	66	66
Thread size	G [inch]	G3/4B	G3/4B	G1B
Weight	[kg]	0.44	0.54	0.54

NOTE: All dimensions in mm unless stated otherwise.

Ordering Information

Table 2. Order Specification Overview

Size qp	DN size	Length	Connection	Interface	OS-No.
EW147 Series water meter for cold potable water, max. 30°C					
1.5m³/h	DN15	110mm	G3/4B	None	EW147A1201
1.5m³/h	DN15	130mm	G3/4B	None	EW147A1301
2.5m³/h	DN20	130mm	G1B	None	EW147A2001
1.5m³/h	DN15	110mm	G3/4B	Pulse output: 10l/pulse	EW147P1201
2.5m³/h	DN20	130mm	G1B	Pulse output: 10l/pulse	EW147P2001
EW148 Series water meter for warm potable water, max. 90°C					
1.5m³/h	DN15	110mm	G3/4B	None	EW148A1201
1.5m³/h	DN15	130mm	G3/4B	None	EW148A1301
2.5m³/h	DN20	130mm	G1B	None	EW148A2001
1.5m³/h	DN15	110mm	G3/4B	Pulse output: 10l/pulse	EW148P1201
2.5m³/h	DN20	130mm	G1B	Pulse output: 10l/pulse	EW148P2001

Accessories

Union nut, sealing and externally threaded red bronze tailpiece


	DN 15	VA7401A015
	DN 20	VA7401A020

868MHz RF module




for EW147A and EW148A EWA3004612

MAPRESS stainless steel fitting with sealing

	DN 15, for 15 mm pipe-Ø	VA7403A015
	DN 15, for 18 mm pipe-Ø	VA7403A018
	DN 20, for 22 mm pipe-Ø	VA7403A020

Sanpress red bronze fitting with sealing

	DN 15, for 15 mm pipe-Ø	VA7404A015
	DN 15, for 18 mm pipe-Ø	VA7404A018
	DN 20, for 22 mm pipe-Ø	VA7404A020

Environmental and Combustion Control

Honeywell GmbH

Hardhofweg

74821 Mosbach, Germany

Phone: +49 (6261) 810

Fax: +49 (6261) 81393

www.honeywell.com

EN0H-2607GE25 R0709
September 2009

© 2009 Honeywell International Inc.

Subject to change without notice

Manufactured for and on behalf of the Environmental and Combustion Controls Division of Honeywell Technologies Sàrl, Rolle, Z.A. La Pièce 16, Switzerland or its authorized representative.

 **AutomatikCentret**

Strandvejen 42 • Saksild • 8300 Odder

86 62 63 64 • www.automatikcentret.dk

info@automatikcentret.dk

Honeywell