


INSTRUCTIONS



OJ Air Cloud®

67798 03/18 (KHE) © 2018 OJ Electronics A/S

OJ Air Cloud®
FOR AHU AND VENTILATION CONTROL

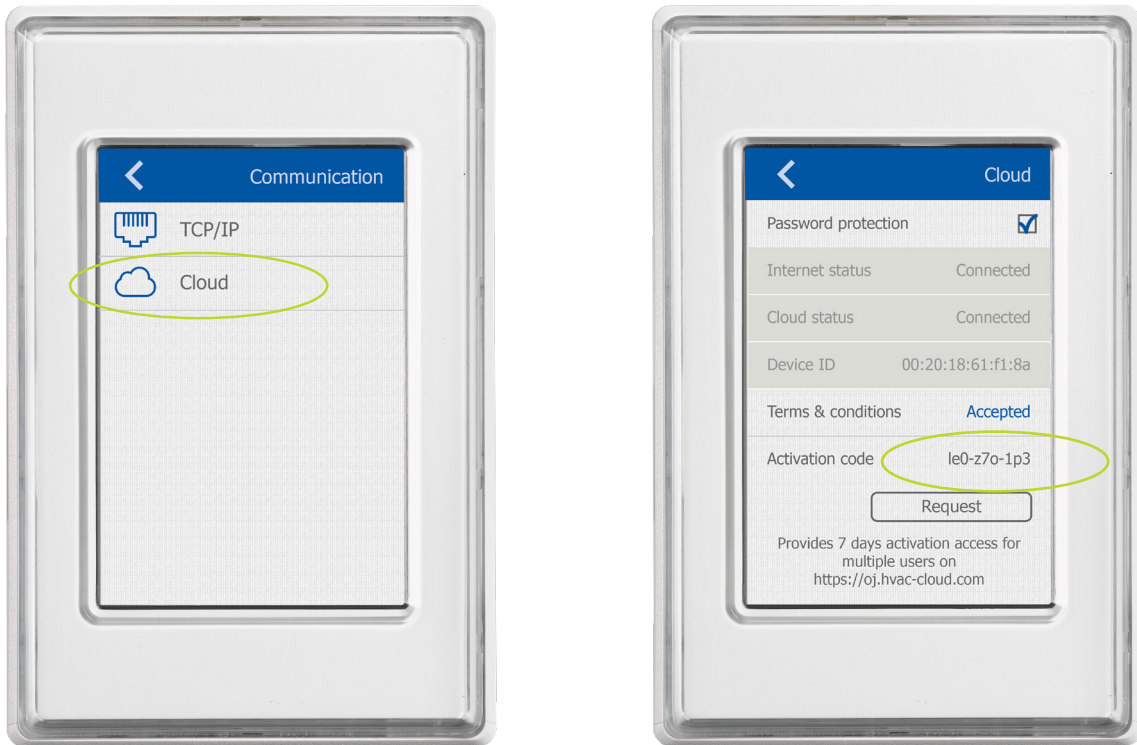
 **AutomatikCentret**
Strandvejen 42 • Saksild • 8300 Odder
86 62 63 64 • www.automatikcentret.dk
info@automatikcentret.dk


OJ ELECTRONICS

How to connect your OJ controller (device) to OJ Air Cloud®

You will need: OJ controller, internet access and a PC/Mac.

Connect the device by choosing Cloud from the Communication menu.

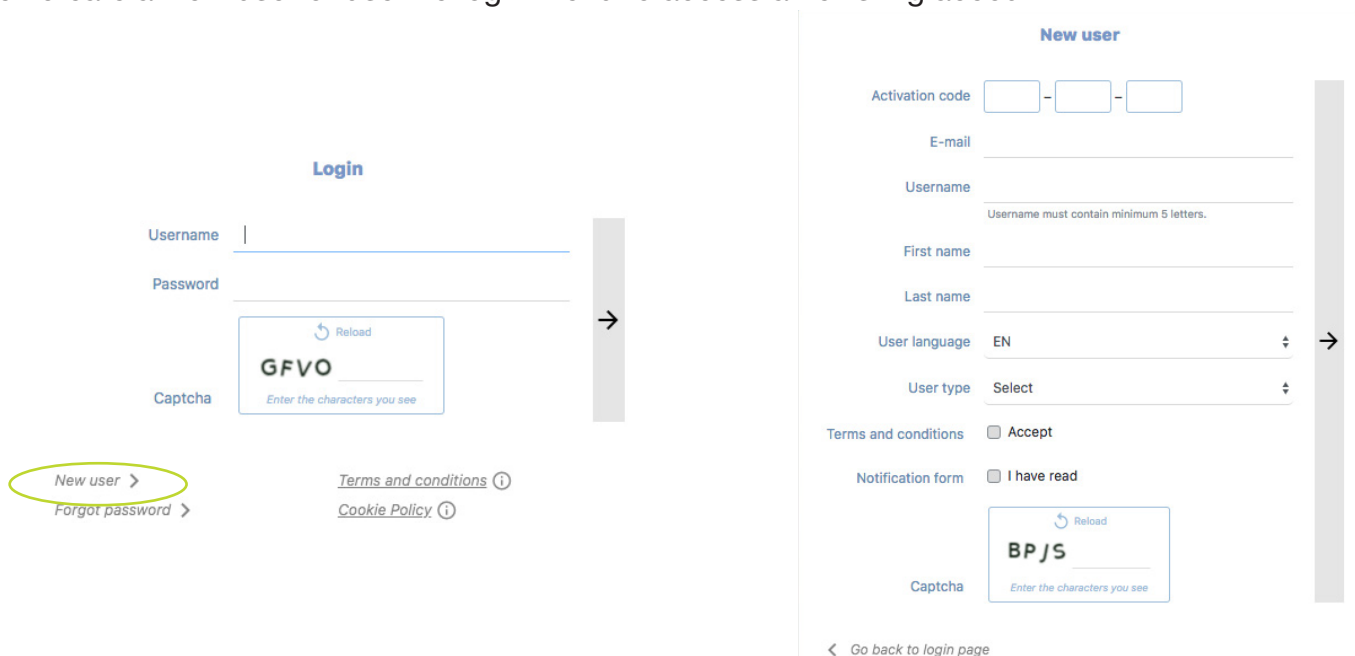


Get the activation code from the device in order to open a new user account or to access the device from an existing account.

Open <https://oj.hvac-cloud.com> in a Google Chrome browser.

Login and New User

Click create a New user or use the login menu to access an existing account.



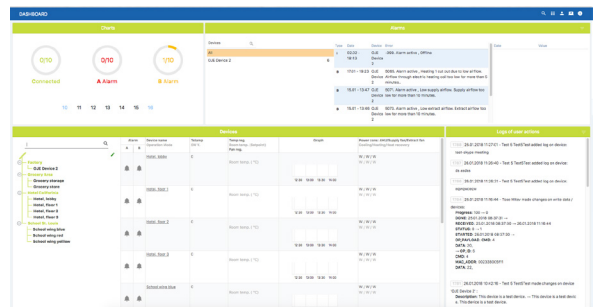
If you already have an account and want to add a device, you can choose Register new device from the Menu bar and type in your activation code.

You can use your PC/Mac/tablet/mobile as long as you are using a Google Chrome-browser. In order to access full functionality, we suggest that you use a PC or a Mac.

Once logged in, you can choose between showing your devices in two different views as listed below:

The Dashboard will show you the:

- Charts
- Alarms
- Devices
- Logs of user actions



The Map view offers you a:

- Device tree view
- Visual overview

Note: The 📍 on the tree view indicates that the device needs a geolocation before it can be shown on the map. To add a geolocation, go to the Config device located in the device function bar.



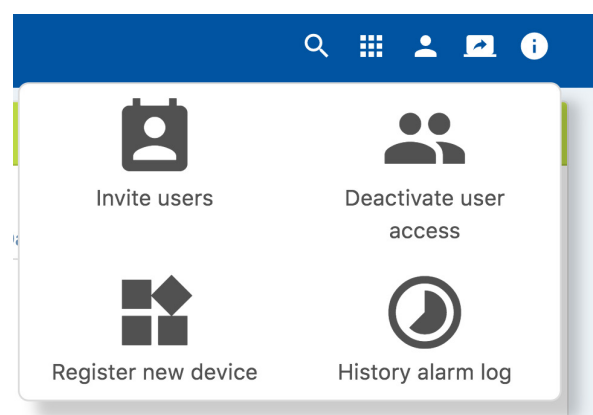
Menu bar

The menu bar gives you the opportunity to manage your account and the belonging devices.



Furthermore, the menu bar can be used to:

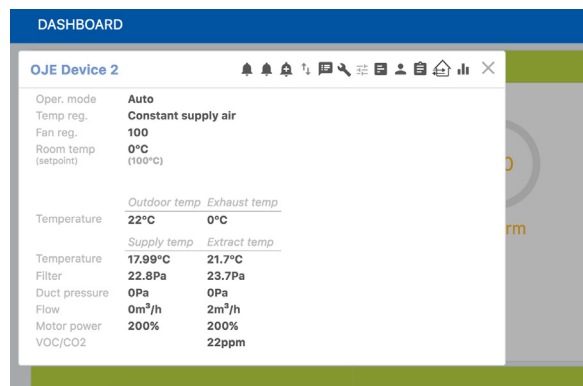
- Search for controllers
- Manage controllers
 - Invite users
 - Deactivate user access
 - Register a new device
 - Access history alarm log
- User settings
 - Reset password
 - User settings
 - Log out
- Shift between Map or Device view
- Info / help



Both from the dashboard and from the map view, the device can be shown with a single click. The view shows the most relevant data from the device in a single view. The function bar gives you access to all the device's relevant possibilities as listed below.

The Device function bar consists of:

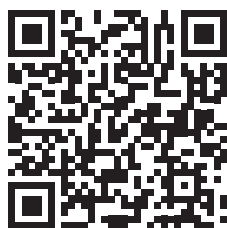
- Alarm
- E-mail alerts
- Connection
- Logs of user actions
 - History
 - Add new note
- Config device
 - Name (Re-name device)
 - Location (Add geolocation for the device to show on map view)
 - Comment window
- Device operation
 - Temperature set-point
 - Time zone
 - File upload and download
- Scheduler
 - Visual presentation
 - Edit the scheduler
- Device users
 - Users that have access to the device
- Table view
 - Shows relevant variables and their values concerning the device
- Graphic view
 - Visual representation of the AHU
- Monitoring graphic view
 - Graph of relevant values for the device



DASHBOARD		
OJE Device 2		
Oper. mode	Auto	
Temp reg.	Constant supply air	
Fan reg.	100	
Room temp (setpoint)	0°C (100°C)	
Temperature		
Outdoor temp	Exhaust temp	
22°C	0°C	
Temperature		
Supply temp	Extract temp	
17.99°C	21.7°C	
Filter	22.8Pa	23.7Pa
Duct pressure	0Pa	0Pa
Flow	0m³/h	2m³/h
Motor power	200%	200%
VOC/CO2		22ppm



For more information, you can access our user manual here:



<https://oj.hvac-cloud.com/webapp/help/index.html>

OJ ELECTRONICS A/S
Stenager 13B • DK-6400 Sønderborg
Tél. : +45 73 12 13 14 • Fax +45 73 12 13 13
oj@ojelectronics.com • www.ojelectronics.com

 **AutomatikCentret**
Strandvejen 42 • Saksild • 8300 Odder
86 62 63 64 • www.automatikcentret.dk
info@automatikcentret.dk