

OJ Air Cloud® for AHU and ventilation control



OJ Air Cloud®

- Troubleshooting from the cloud
- Effective planning
- What you see, they see
- Be (even better!) prepared
- Simple data access

OJ Air Cloud® is a system developed especially for OJ Electronic's HVAC controllers. The users, which can include facility managers, service partners and AHU manufacturers, can all invite each other to be part of OJ Air Cloud®, and as you would expect, the cloud-based system provides a total overview of all the systems connected to the cloud and their current status. This enables rapid identification and diagnostics of any problems – allowing you and your partners to arrive at the right solution quickly.

Troubleshooting from the cloud

OJ Air Cloud® helps reduce downtime of AHU systems by enabling quicker, easier troubleshooting than ever.

Effective planning

On PCs, OJ Air Cloud® gives access to the feature known as 'Map view'. Map view gives users a visual overview of the actual physical locations

of the AHU systems connected to the cloud, enabling them to plan their travel time with maximum efficiency when scheduling service visits.

What you see, they see

With OJ Air Cloud®, everyone is on the same page. This means that facility managers and service partners minimise the risk of misunderstandings in their co-operation.

Be (even better!) prepared

Having advance access to details about problem sites via OJ Air Cloud® means that service partners can check everything they need to know beforehand – and arrive at the site fully prepared with the right components and spare parts ready in the van.

Simple data access

The OJ Air Cloud® solution offers open API: users can access the data directly in the database, which means that they can develop their own interfaces.



Intelligent Control
Maximum comfort with
low energy consumption

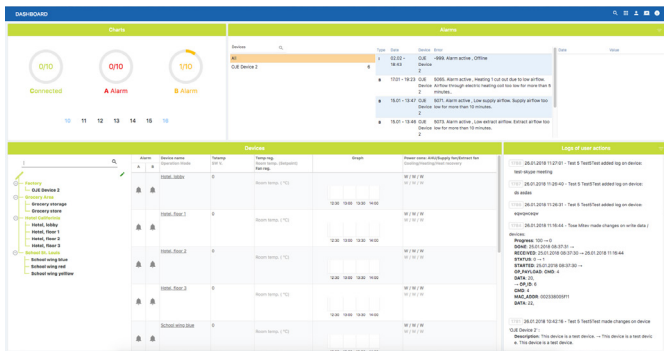


Fig. 1. Dashboard view



Fig. 2. Map view

Specific functions and features of OJ Air Cloud®

Dashboard view

The 'dashboard view' function can be used on all devices. With dashboard view, users can monitor AHU systems from their PC, tablet and/or smartphone.

Map view

On PCs, OJ Air Cloud® gives access to the feature known as 'Map view'. Map view gives users a visual overview of the actual physical locations of the AHU systems connected to the cloud.

Devices

Users can access an overview of all the AHUs connected to their OJ Air Cloud® account – either from the dashboard view or map view.

Device view

When users select a specific system from 'Devices', the 'device view' function can be accessed. Here, users can view data on e.g. operation mode, temperature regulation mode and other important parameters that are useful when monitoring AHU systems, helping to ensure constant optimum operation.

The 'device view' function allows you to access the following information:

- Alarm overview
- Logs of user actions
- Config device
- Device operation
- Scheduler
- Device users
- Table view
- Graph overview
- Monitoring graphic view

API / Cloud to Cloud

The OJ Air Cloud® solution offers API so users can access the data directly in the database.

Secured, encrypted connection

All data sent to and from the OJ Air Cloud® system is handled via secure connections. All data is encrypted, and the system utilises the most recent HTTPS/TSL technology.

GDPR compliant

The OJ Air Cloud® solution complies with the EU regulations on General Data Protection (GDPR).

Restrictions

OJ Air Cloud® works with the whole AHC-3000 range and OJ Air2 produced with Software 5.xx.