

DASHBOARD

### Charts

**Connected**

14 15 16 17 18 19 20

**A Alarm**

**B Alarm**

### Active alarms

Devices	Type	Date	Device	Error	Date	Value
All	i	22.03 - 15:28	AHC-3000-T DEMO	-999. Alarm active , Offline		
AHC-3000-T DEMO						1

### Devices

Alarm	Device name - Operation Mode		Tstamp SW V.	Temp reg. Current temp. (Setpoint) Fan reg.	Graph	Power cons: AHU/Supply fan/Extract fan Cooling/Heating/Heat recovery
	A	B				
		<a href="#">AHC-3000-T AUC</a> Schedule is activated	20.09.2021 15:24:39 1.33	Constant supply air 23.3 °C (22 °C) Const. motor speed %		-- W / 0 W / 0 W -- W / -- W / 0 W
		<a href="#">AHC-3000-T DEMO</a> Manual stop	22.03.2021 15:10:44 1.31	Constant extract air 24.6 °C (22 °C) Const. motor speed %		-- W / 0 W / 0 W -- W / -- W / 0 W

### Logs of user actions

- 9069 20.09.2021 15:11:51 - Robert: Send data for scheduler From AHC-3000-T AUC.
- 9068 20.09.2021 15:10:37 - Robert: Changed Temp. setpoint for AHC-3000-T AUC device to 22 From AHC-3000-T AUC.
- 9067 20.09.2021 15:03:37 - Robert: Changed Temp. setpoint for AHC-3000-T AUC device to 24 From AHC-3000-T AUC.
- 9066 20.09.2021 14:59:32 - Robert: Send data for scheduler From AHC-3000-T AUC.
- 9065 20.09.2021 14:59:20 - Robert: Send data for scheduler From AHC-3000-T AUC.
- 9064 20.09.2021 14:58:34 - Robert: Send data for scheduler From AHC-3000-T AUC.

DASHBOARD

### Charts

1/2

Connected

0/2

A Alarm

0/2

B Alarm

14 15 16 17 18 19 20

### Active alarms

Devices	Type	Date	Device	Error	Date	Value
All	i	22.03 - 15:28	AHC-3000-T DEMO	-999. Alarm active , Offline		
AHC-3000-T DEMO						1

### Devices

	Alarm		Device name Operation Mode	Tstamp SW V.	Temp reg. Current temp. (Setpoint) Fan reg.
	A	B			
 			AHC-3000-T AUC Schedule is activated	20.09.2021 15:26:10 1.33	Constant supply air 23.3 °C (22 °C) Const. motor speed %
			AHC-3000-T DEMO Manual stop	22.03.2021 15:10:44 1.31	Constant extract air 24.6 °C (22 °C) Const. motor speed %

### AHC-3000-T AUC

Oper. mode: **Schedule is activated**

Temp reg.: **Constant supply air**

Current temp. (setpoint): **23.3°C**  
22°C

Current temp [°C]

Supply motor power [%]

	Outdoor temp	Exhaust temp	Power consumption
Temperature	24.4°C	23.8°C	AHU --W
	Supply temp	Extract temp	
Supply fan control	Const. motor speed %	Const. motor speed %	Supply fan 0W
Temperature	23.3°C	24.7°C	Extract fan 0W
Filter	0Pa	0Pa	Cooling --W
Duct pressure	0Pa	0Pa	Heating --W
Flow	0m³/h	0m³/h	Heat recovery 0W
Motor power (setpoint)	25%	25%	
VOC/CO2		0ppm	

### of user actions

- 9065 20.09.2021 14:59:20 - Robert: Send data for scheduler From AHC-3000-T AUC.
- 9064 20.09.2021 14:58:34 - Robert: Send data for scheduler From AHC-3000-T AUC.

DASHBOARD

Charts

1/2

Connected

0/2

**A Alarm**

0/2

**B Alarm**

14 15 16 17 18 19 20

Active alarms

### AHC-3000-T AUC

Oper. mode: **Schedule is activated**

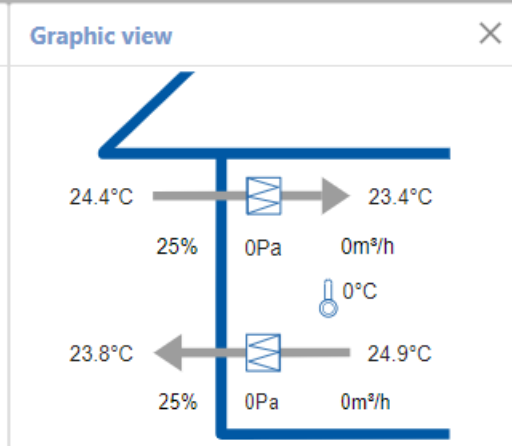
Temp reg.: **Constant supply air**

Current temp. (setpoint): **23.4°C** / 22°C

Temperature	Outdoor temp	Exhaust temp
24.4°C	24.4°C	23.8°C
Supply temp	Extract temp	
23.4°C	24.9°C	

Supply fan control	Const. motor speed %	Const. motor speed %
Temperature	23.4°C	24.9°C
Filter	0Pa	0Pa
Duct pressure	0Pa	0Pa
Flow	0m <sup>3</sup> /h	0m <sup>3</sup> /h
Motor power (setpoint)	25%	25%
VOC/CO2		0ppm

Current temp [°C] and Supply motor power [%] charts are visible.



### Scheduler

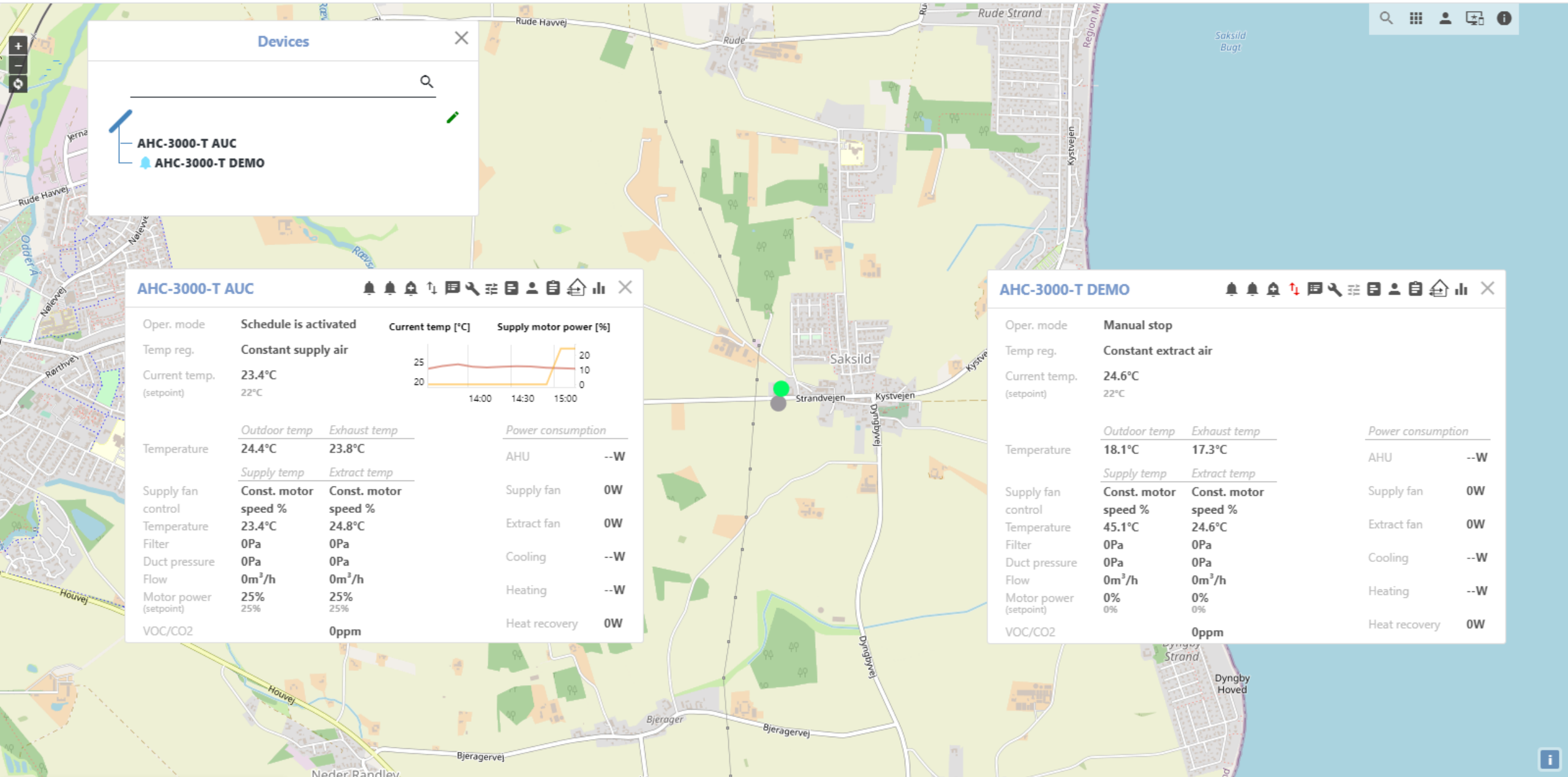
Sept 2021

Mon	Tue	Wed	Thu	Fri	Sat	Sun
0	1	2	3	4	5	6
7	8	9	10	11	12	13
14	15	16	17	18	19	20
21	22	23	24	25	26	27
28	29	30	1	2	3	

Exceptions: Exception 1, Exception 2, Exception 3

Logs of user actions

- 9065 20.09.2021 14:59:20 - Robert: Send data for scheduler From AHC-3000-T AUC.
- 9064 20.09.2021 14:58:34 - Robert: Send data for scheduler From AHC-3000-T AUC.
- 9063 20.09.2021 14:58:16 - Robert: Send data for scheduler From AHC-3000-T AUC.
- 9062 20.09.2021 14:57:18 - Robert: Send data for scheduler From AHC-3000-T AUC.
- 9061 20.09.2021 14:48:23 - Robert: Send data for scheduler From AHC-3000-T AUC.
- 9060 20.09.2021 14:47:19 - Robert: Send data for scheduler From AHC-3000-T AUC.



### Devices

- AHC-3000-T AUC
- AHC-3000-T DEMO

### AHC-3000-T AUC

Oper. mode: **Schedule is activated**

Temp reg.: **Constant supply air**

Current temp. (setpoint): **23.4°C** / 22°C

Temperature: Outdoor temp **24.4°C**, Exhaust temp **23.8°C**

Supply fan control: **Const. motor speed %**

Temperature: **23.4°C**

Filter: **0Pa**

Duct pressure: **0Pa**

Flow: **0m³/h**

Motor power (setpoint): **25%** / 25%

VOC/CO2: **0ppm**

Supply motor power [%]:

Power consumption:

AHU	--W
Supply fan	0W
Extract fan	0W
Cooling	--W
Heating	--W
Heat recovery	0W

### AHC-3000-T DEMO

Oper. mode: **Manual stop**

Temp reg.: **Constant extract air**

Current temp. (setpoint): **24.6°C** / 22°C

Temperature: Outdoor temp **18.1°C**, Exhaust temp **17.3°C**

Supply fan control: **Const. motor speed %**

Temperature: **45.1°C**

Filter: **0Pa**

Duct pressure: **0Pa**

Flow: **0m³/h**

Motor power (setpoint): **0%** / 0%

VOC/CO2: **0ppm**

Power consumption:

AHU	--W
Supply fan	0W
Extract fan	0W
Cooling	--W
Heating	--W
Heat recovery	0W

### Table Of Contents

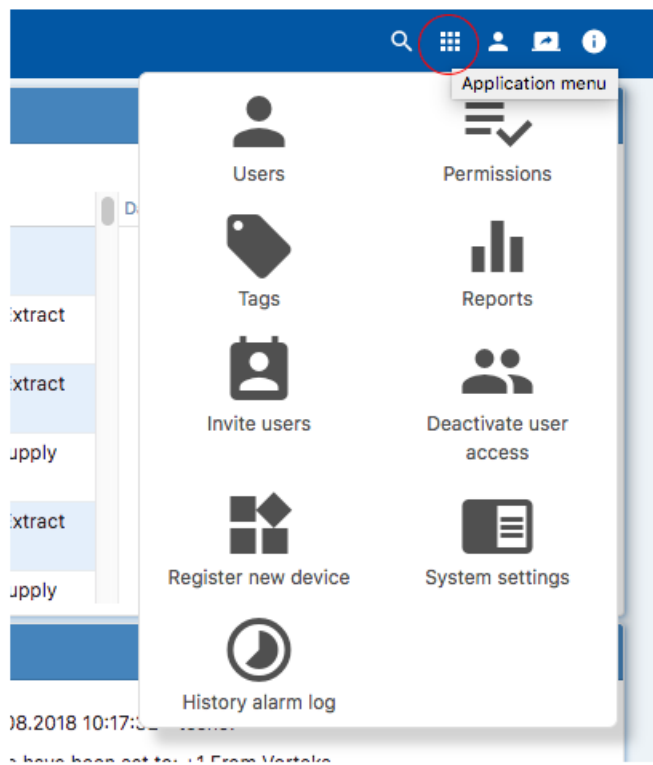
- Contents:
- 1. Application overview
  - 2. Login screen
  - 3. Main menu
  - 4. Dashboard view
  - 5. Map view
  - 6. Application menu continuation
    - 6.1. Reports
    - 6.2. System settings
    - 6.3. System logs

### Previous topic

5. Map view

## 6. Application menu continuation

This section is a continuation of the [Application menu](#) section. The functionalities of a part of the menu which were not explained are covered here. It contains the *reports*, *system settings* and *system logs* submenus.



### 6.1. Reports

