



Braukmann RV260



Strandvejen 42 • Saksild • 8300 Odder
86 62 63 64 • www.automatikcentret.dk
info@automatikcentret.dk

Controllable anti-pollution check valve EA type,
add-on for pressure reducing valves and filters

APPLICATION

Check valves of this type are particularly suitable for integral use with pipeline appliances such as water meters. Check valves are safety devices for independent prevention of water backflow, for example from drinking water appliances back into the central water supply system.

They can also be used for industrial, commercial and similar systems where back pressure, backflow and back syphonage must be prevented.

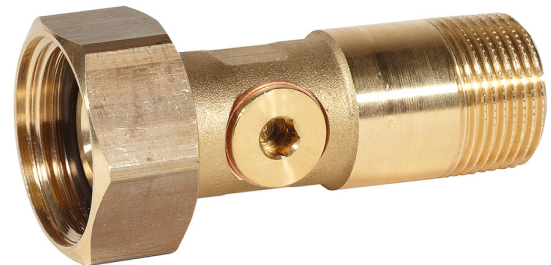
The classifications of appliances to meet these requirements are specified in EN 1717.

APPROVALS

- VA

SPECIAL FEATURES

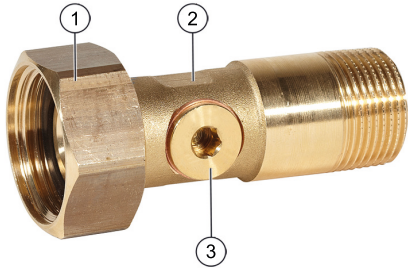
- Universal application
- Easy installation
- Quiet operation
- Creates no shock pressure loadings
- Suitable for installation in any position
- Low pressure loss
- All materials are UBA conform



TECHNICAL DATA

Media	
Medium:	Drinking water
Connections/Sizes	
Connection size:	Male threaded union R ¹ / ₂ " and R ³ / ₄ " Female threaded union G ³ / ₄ " and G1"
Pressure values	
Opening pressure:	approx. 0.03 bar
Max. inlet pressure:	10.0 bar
Operating temperatures	
Max. operating temperature medium:	5 - 40 °C
Specifications	
Liquid category:	2 (no hazardous materials)

CONSTRUCTION

Overview	Components	Materials
	1 Male threaded union with flat wrench faces	Brass
	2 Housing	Dezincification-resistant brass
	3 Test plug with seal ring	Dezincification-resistant brass
Not depicted components:		
	Lip seal ring	EPDM
	Check valve insert	High-grade synthetic material

METHOD OF OPERATION

Spring loaded check valves have a moving seal disc which is lifted off the seat by a greater or lesser amount depending on the flow rate through the valve. If the flow falls towards zero, then the spring pushes the disc back onto the seat and seals the waterway.

To ensure continuing correct function it is recommended that check valves be regularly checked and maintained (as specified in EN 1717).

TRANSPORTATION AND STORAGE

Keep parts in their original packaging and unpack them shortly before use.

The following parameters apply during transportation and storage:

Parameter	Value
Environment:	clean, dry and dust free
Min. ambient temperature:	5 °C
Max. ambient temperature:	55 °C
Min. ambient relative humidity:	25 % *
Max. ambient relative humidity:	85 % *

*non condensing

Installation Example

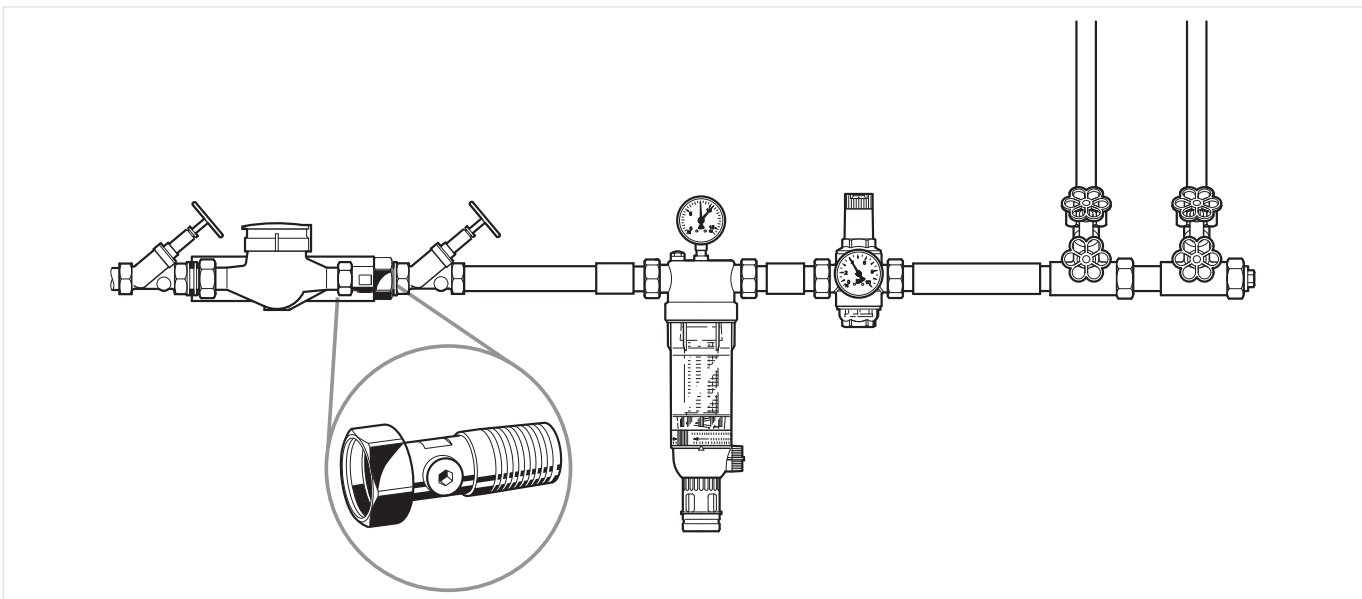


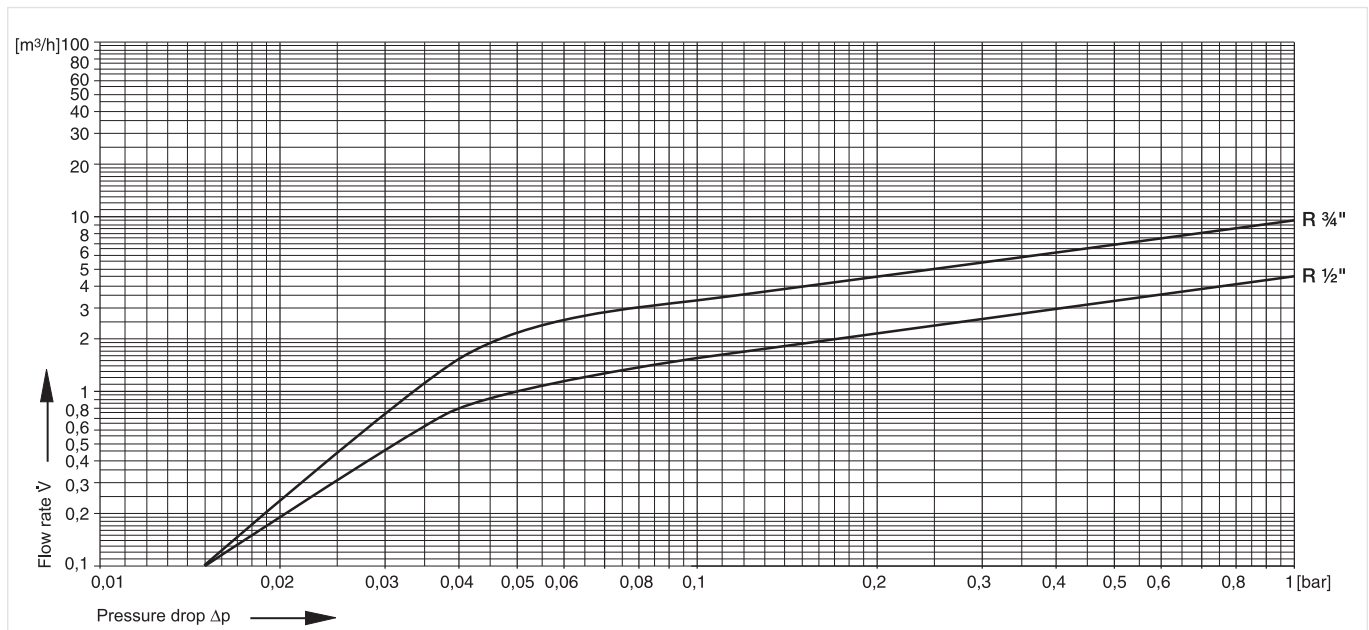
Fig. 1 Standard installation example for the check valve

TECHNICAL CHARACTERISTICS

kvs-Values

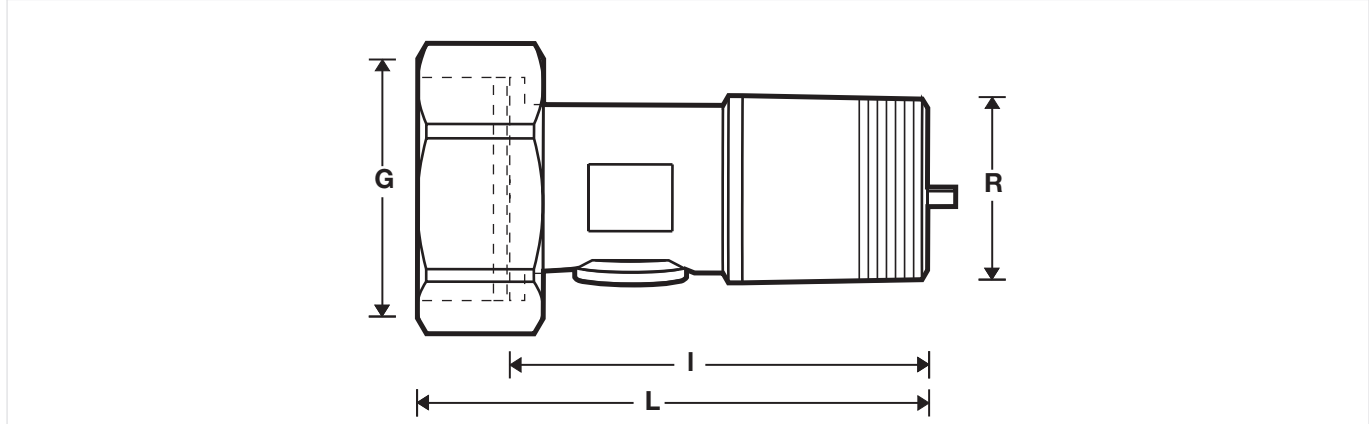
Connection sizes:	DN15	DN20
k _{VS} -value (m ³ /h):	6.0	10.0

Pressure drop characteristics



DIMENSIONS

Overview



Parameter		A	AS	AA
Connection size:	R	1/2"	3/4"	3/4"
Nominal size diameter:	G	3/4"	1"	1"
Weight:	kg	0.18	0.22	0.26
Dimensions:	L	48	58.5	83.5
	l	40	50	75
Test and drain plug	R	1/8"	1/4"	1/4"
Nominal flow rate at Δp = 0.15 bar	m ³ /h	1.8	3.8	3.8
Danish Approval No.		VA 1.55/19260		

Note: All dimensions in mm unless stated otherwise.

ORDERING INFORMATION

The following tables contain all the information you need to make an order of an item of your choice. When ordering, please always state the type, the ordering or the part number.

Options

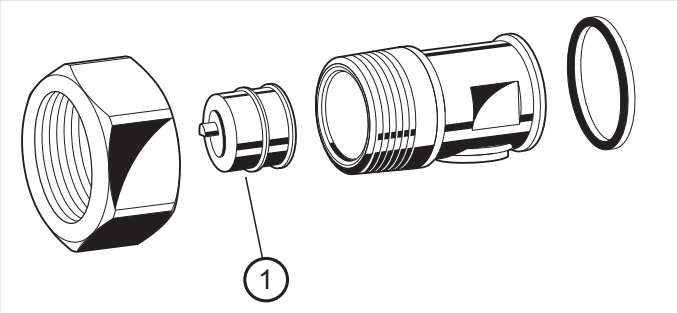
The valve is available in the following sizes: 1/2" and 3/4"

- standard
- not available

		RV260-1/2A	RV260-3/4AS	RV260-3/4AA
Connection type:	Female threaded union on the inlet, male thread on the outlet	•	•	•

Spare Parts

Check valve RV260, from 2011 onwards

Overview	Description	Dimension	Part No.
	1 Check valve insert		
		1/2"	2166200
		3/4"	2110200



Manufactured for and on behalf of
 Pittway Sàrl, Z.A., La Pièce 4,
 1180 Rolle, Switzerland
 by its authorised representative
 Ademco 1 GmbH

For more information
homecomfort.resideo.com/europe
 Ademco 1 GmbH, Hardhofweg 40,
 74821 MOSBACH, GERMANY
 Phone: +49 6261 810
 Fax: +49 6261 81309



Strandvejen 42 ♦ Saksild ♦ 8300 Odder
 86 62 63 64 ♦ www.automatikcentret.dk
info@automatikcentret.dk